

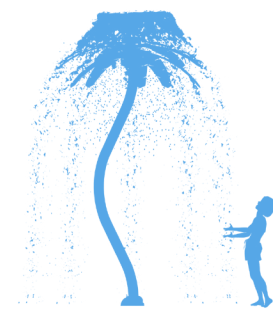


Ideal age group: For all ages

VOR 0510 WAVY PALM

PRODUCT HIGHLIGHTS

- Creates a visual interest as the water is falling on the leaves
- Encourages imaginative and immersive play



*Immerse under this
Palm tree!*

You may also like



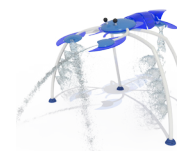
• Flower
(VOR 0564)



• Sea Serpent N°3
(VOR 0527)



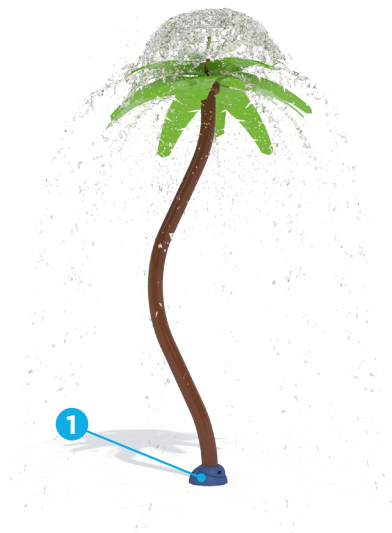
• Crab N°1
(VOR 7208)



• Lobster N°2
(VOR 7656)

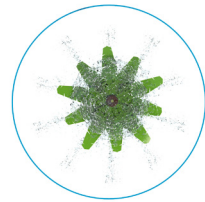


World leader in aquatic play solutions with over
6,000 installations worldwide
vortex-intl.com • info@vortex-intl.com
1.877.586.7839 (free USA/CND) • +1.514.694.3868 (INTERNATIONAL)



Spray Zone

ø 144" (ø 366 cm)



H/W/L	Pressure
150/82/82 in	10-15 PSI
380/208/208 cm	0.69-1.03 BAR

Flow	Smartflow
20-30 GPM	-
75.7-113.6 LPM	-
Color choices: Colors as shown	

VORTEX EXCLUSIVE TECHNOLOGIES

This product features the following technologies that are unique to Vortex.



TOEGUARD™

- Soft-touch Elastomer
- Protects children's toes from anchoring hardware
- Durable, vandal resistant, resistant to chemicals
- Infused with a UV resistant bright color
- Available in one or two pieces ensuring tight fit to post

WATER EFFECTS

- Inverted bell spray (1)



World leader in aquatic play solutions with over
6,000 installations worldwide
vortex-intl.com • info@vortex-intl.com
1.877.586.7839 (free USA/CND) • +1.514.694.3868 (INTERNATIONAL)